

Custom Graphics Collection

The Firth Custom Graphics Collection is a selection of contemporary designs all of which can be re-coloured in conjunction with our 290 colour tuft box or to clients own bespoke requirements for as little as 200m². Manufactured in the UK from 80% British Wool and 20% Nylon yarn this collection can be produced in velvet, twist, stippled and combinations of all these blends to create unique effects and textures. Alternative weights and backing options are also available suitable for a wide range of end use locations including hotel bedrooms and public areas. Please contact our Sales Office for more assistance on 01484 721529.

SPECIFICATION

	FG 1150	FG 1300	FG1425
<i>Construction</i>	Graphics tufted	Graphics tufted	Graphics tufted
<i>Gauge</i>	31.5 per 10 cm (8 per inch)	31.5 per 10 cm (8 per inch)	31.5 per 10 cm (8 per inch)
<i>Pile yarn</i>	2 ply 80% British wool 20% Nylon	2 ply 80% British wool 20% Nylon	2 ply 80% British wool 20% Nylon
<i>Pile weight</i> (+/-5%)	1150gm/m ² (34oz/yd ²)	1300gm/m ² (38oz/yd ²)	1425gm/m ² (42oz/yd ²)
<i>Total weight</i> (+/-10%)	2300gm/m ² (68oz/yd ²)	2450gm/m ² (72oz/yd ²)	2580gm/m ² (76oz/yd ²)
<i>Pile height above backing</i> (+/-0.5 mm)	7 mm	7 mm	7 mm
<i>Total carpet thickness</i> (+/-1 mm)	10.5 mm	10.5 mm	10.5 mm
<i>Stitch rate</i> (Dependent on design)	30.5 - 33.5 per 10 cm	34.5 - 37.5 per 10 cm	38 - 41 per 10 cm
<i>Primary backing</i>	Polypropylene	Polypropylene	Polypropylene
<i>Secondary backing</i>	Jute/synthetic (others on request)	Jute/synthetic (others on request)	Jute/synthetic (others on request)
<i>Widths</i>	4m and 5m (others on request)	4m and 5m (others on request)	4m and 5m (others on request)
<i>Suitability</i> (Subject to design selection)	General contract	Heavy contract	Heavy contract

PROPERTIES

<i>Flammability</i>	BS4790/BS5287	Pass, low radius of effect of ignition
<i>Static electricity</i>		Low propensity to static down to 30% relative humidity

GENERAL INFORMATION

All technical specifications are subject to normal manufacturing tolerances found in BS EN1307:2008 and we reserve the right to change these without prior notice. Full specification and information on alternative widths, weights, backings and pile yarns available on request.

Colour

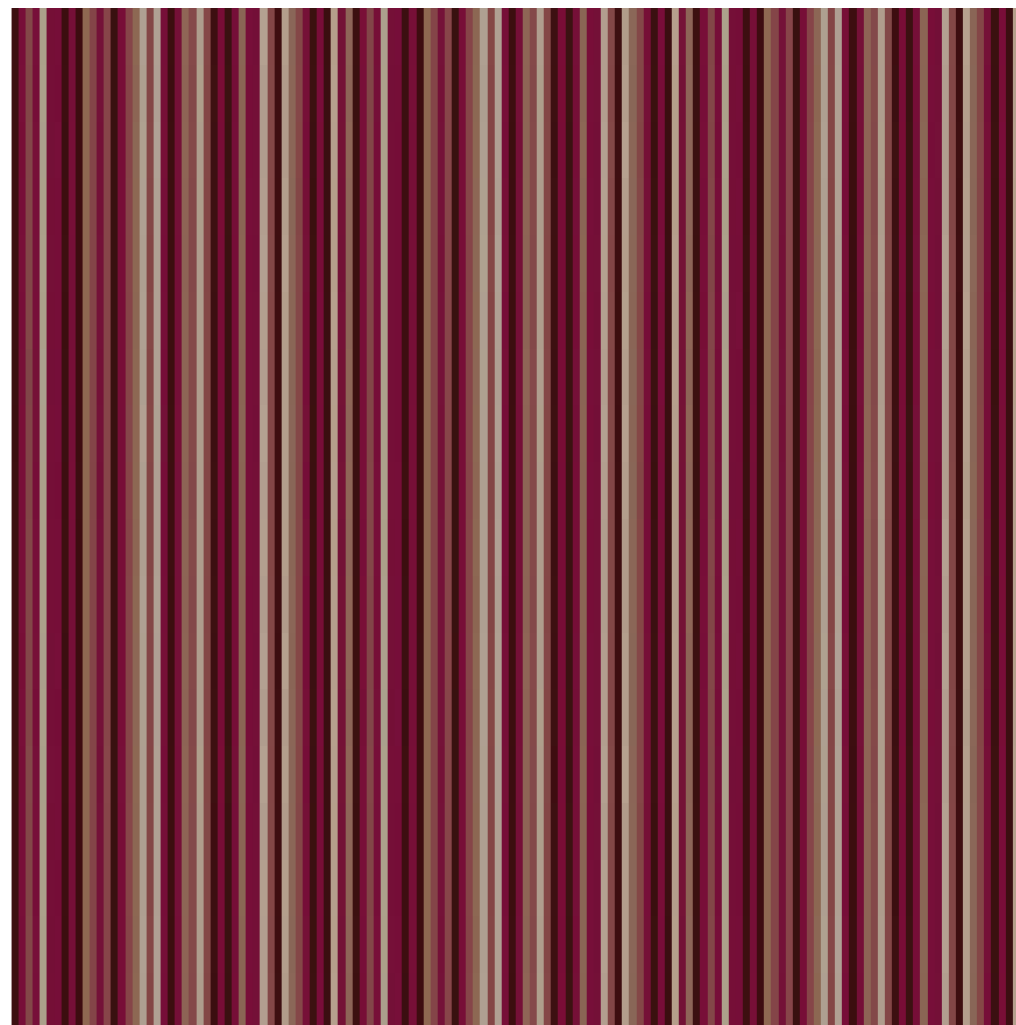
Due to limitations in the manufacturing process, colour may vary from batch to batch. Cut pile carpets, particularly plain colours, may show shading/pile reversal. This tendency is inherent in all cut pile fabrics and is not detrimental to the wear of the carpet. It cannot be considered a manufacturing defect.

Installation

The method of installation should conform to BS 5325. The subfloor should be dry, smooth, clean and level and any defects should be made good before laying. For installations requiring more than one width, consideration should be given to seam locations, as pattern matching cannot be guaranteed.

Maintenance

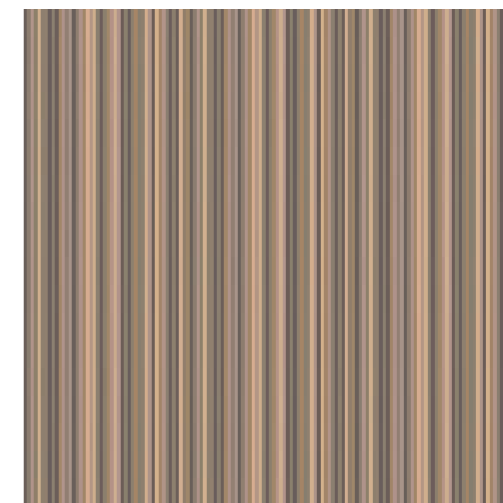
Vacuum for normal day to day cleaning. Spills and stains must be removed as part of a comprehensive maintenance plan including the use of dry or hot water extraction methods when required, depending upon local conditions. Firth Carpets and Floorings products will provide maximum performance if installed and maintained with the recommendations set out in our installation and maintenance schedules, available on request.



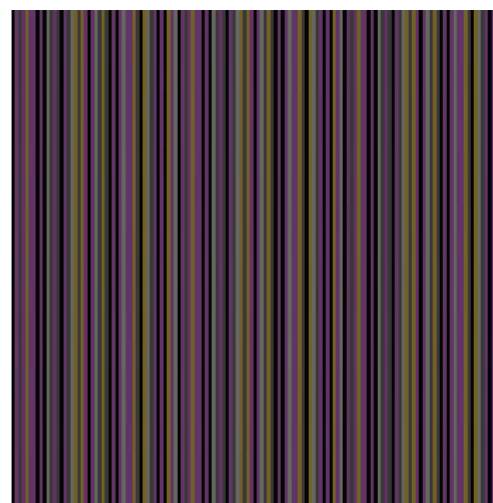
BPS T01.1



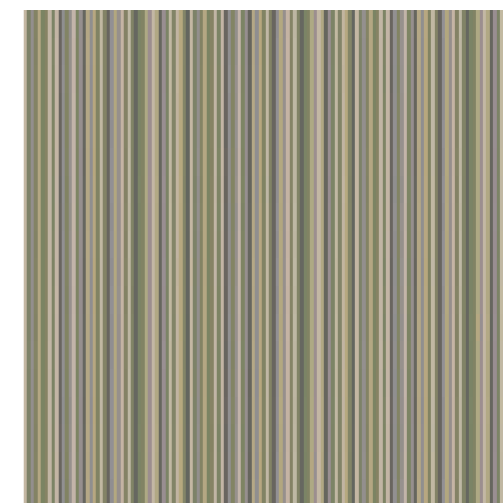
T01.2



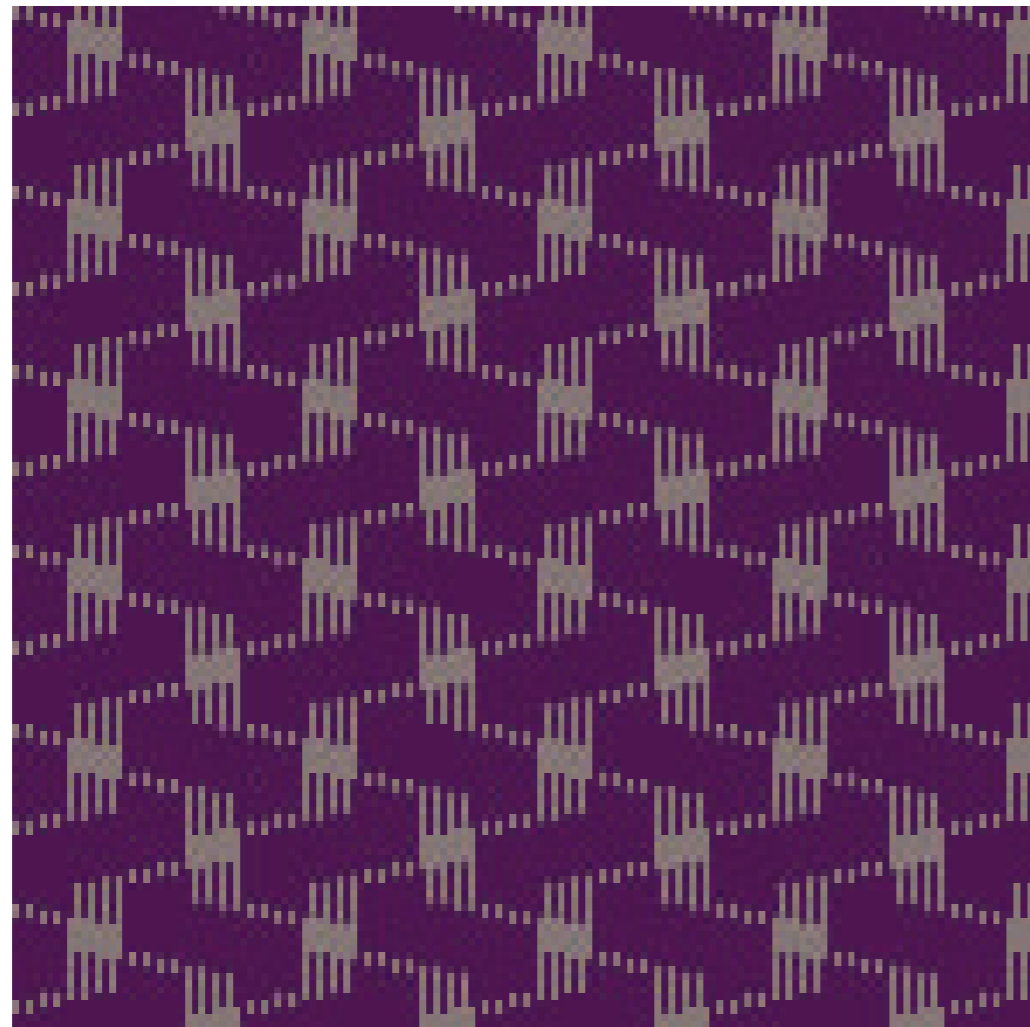
T01.3



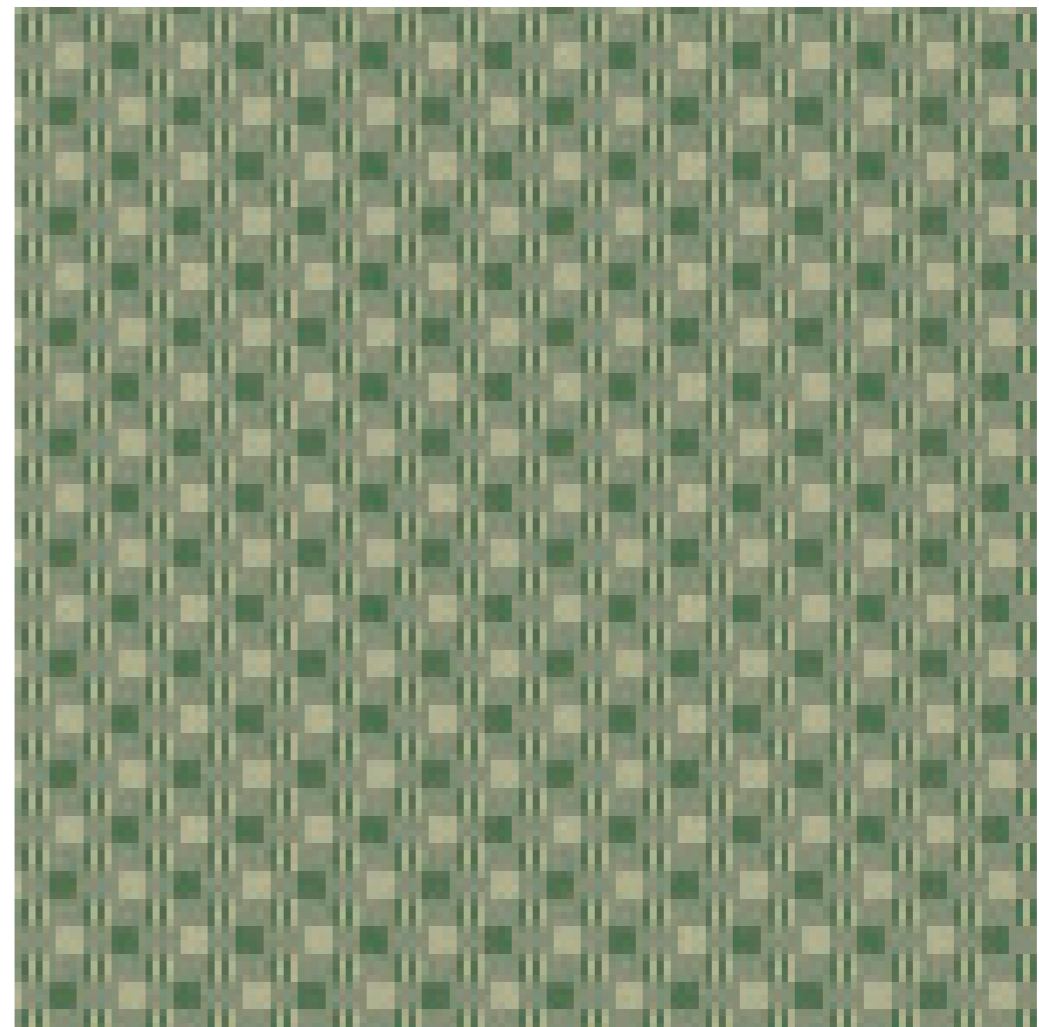
T01.4



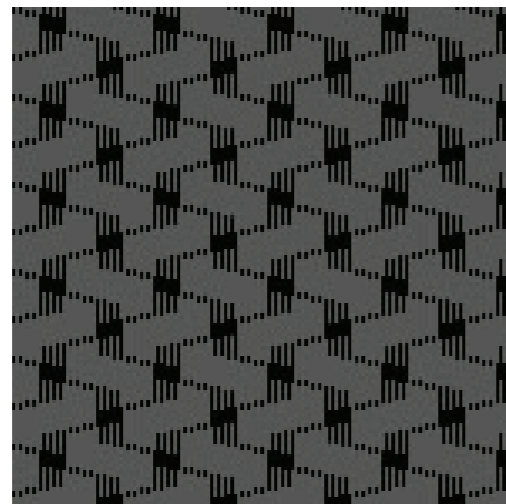
T01.5



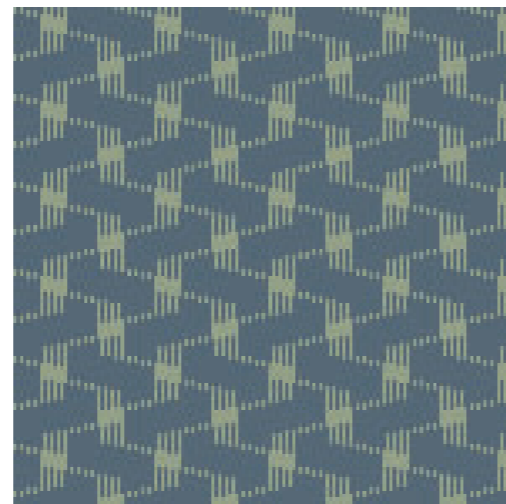
BPS T02.1



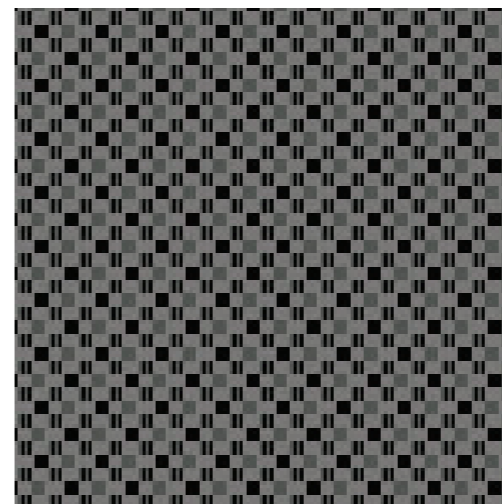
BPS T03.1



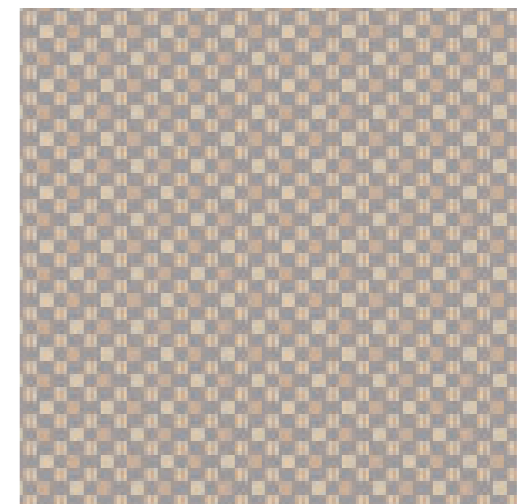
T02.2



T02.3



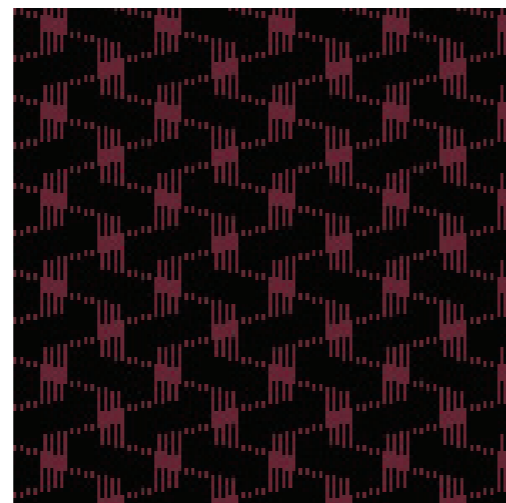
T03.2



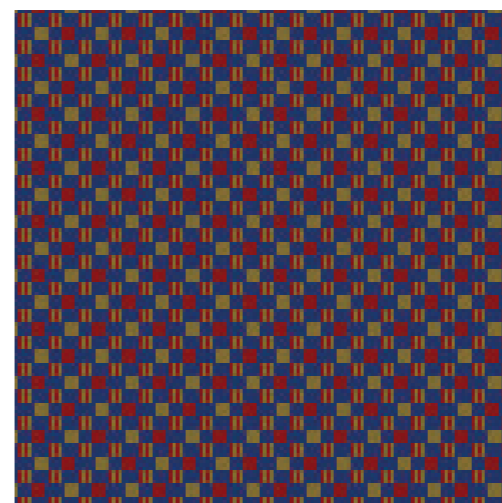
T03.3



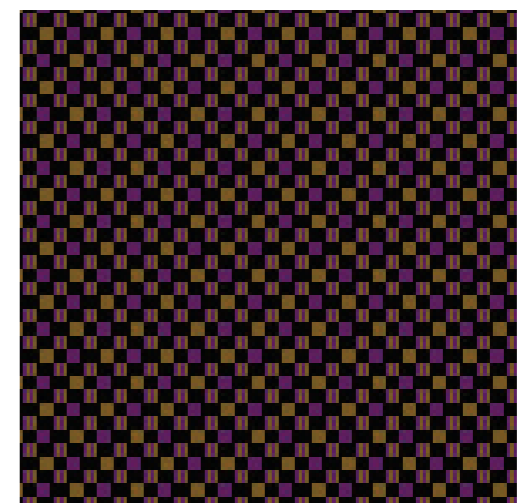
T02.4



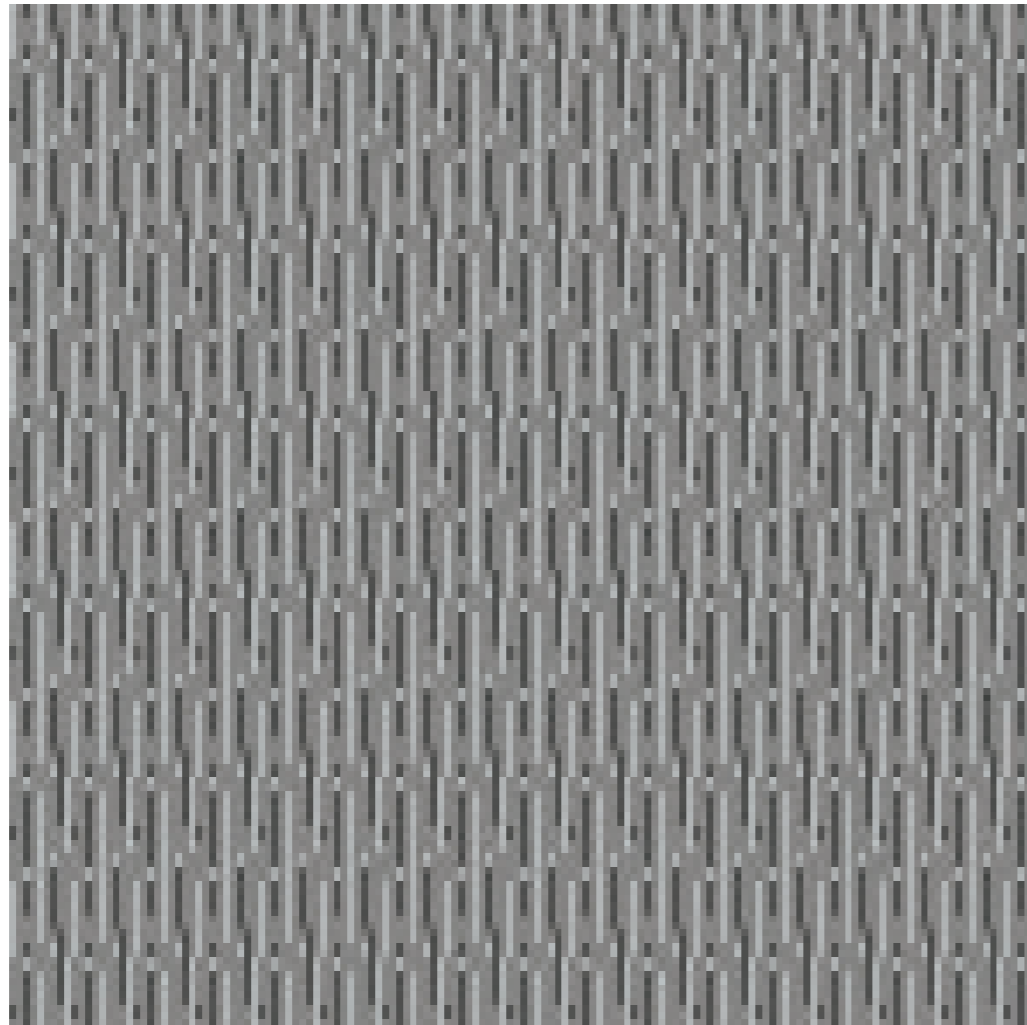
T02.5



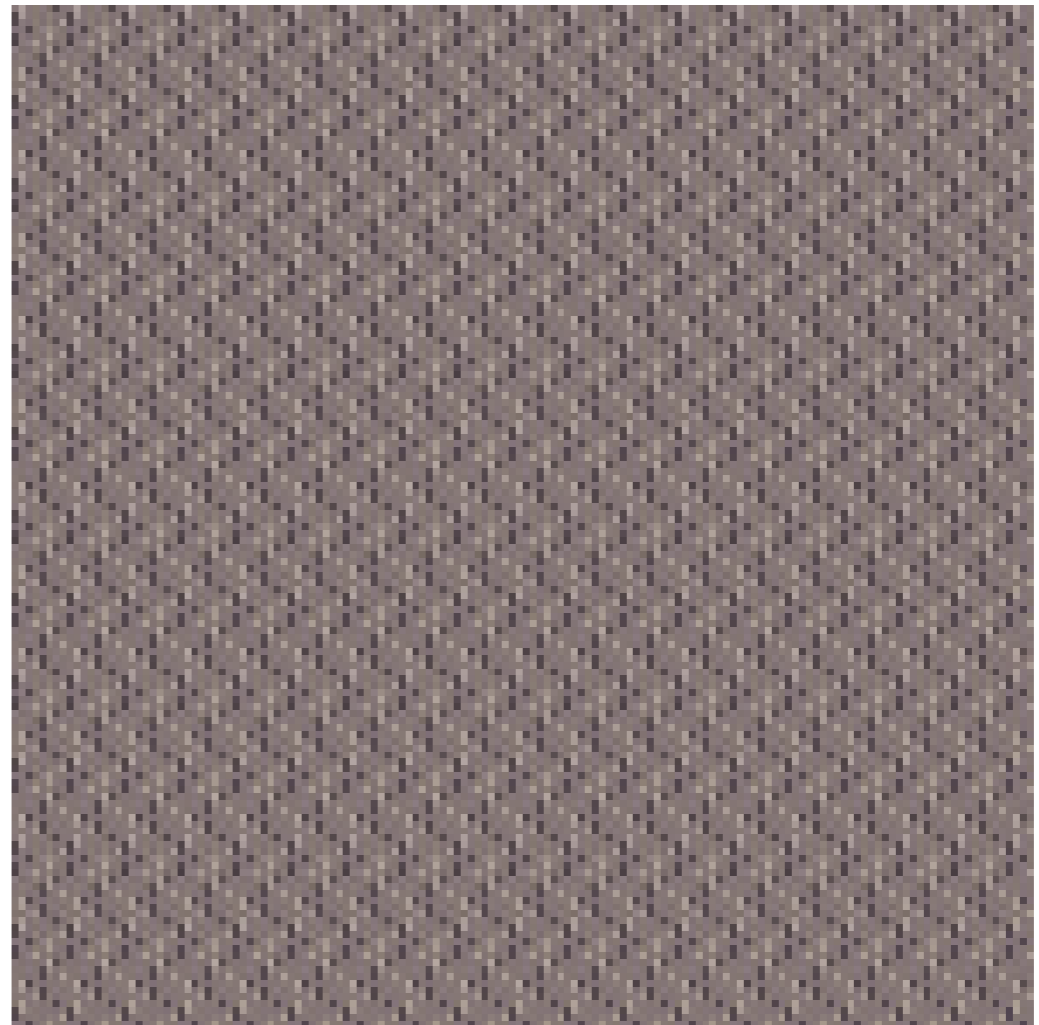
T03.4



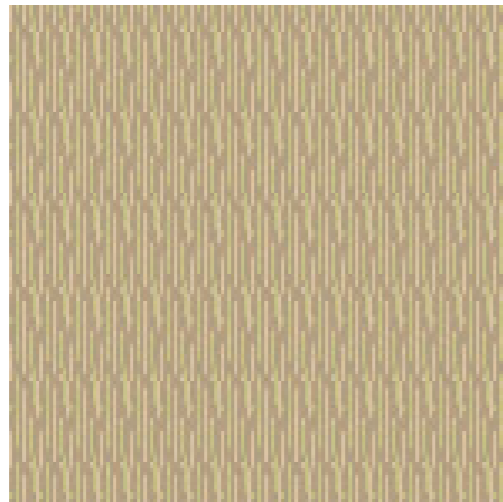
T03.5



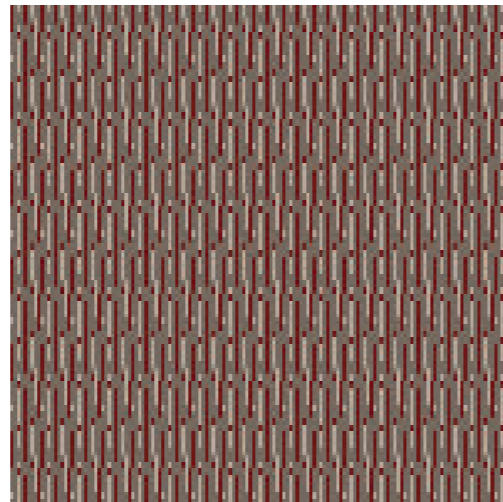
BPS T04.1



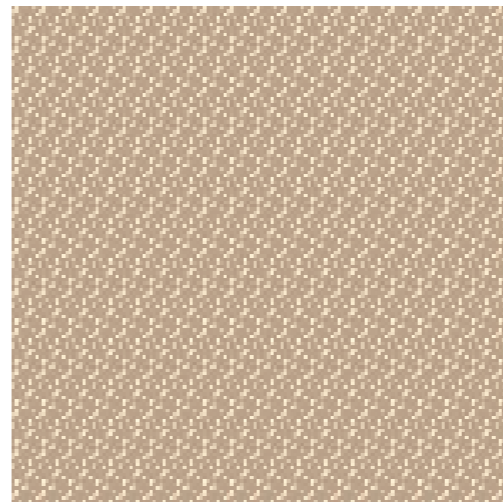
BPS T05.1



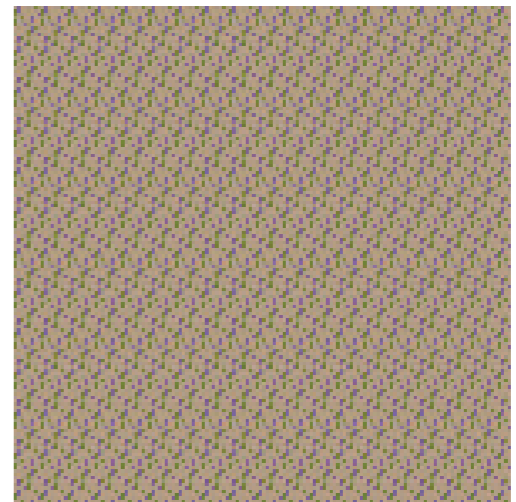
T04.2



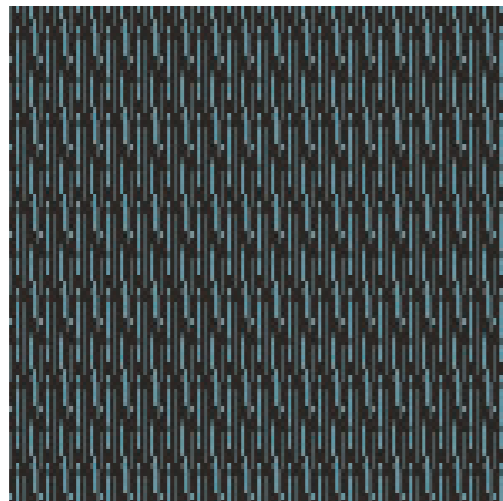
T04.3



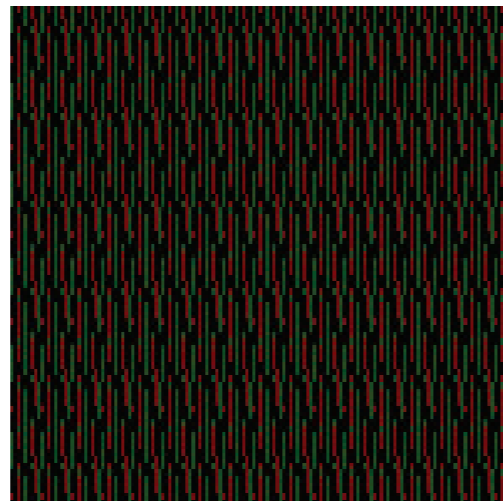
T05.2



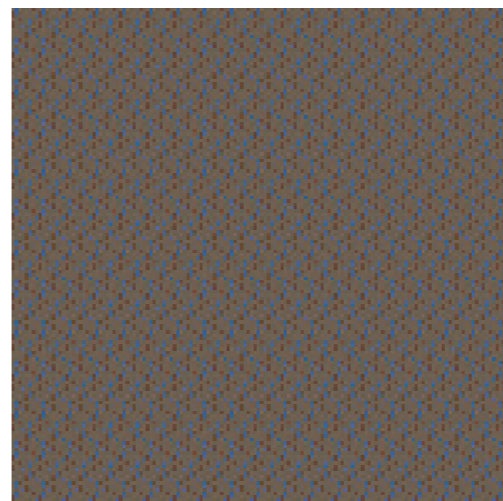
T05.3



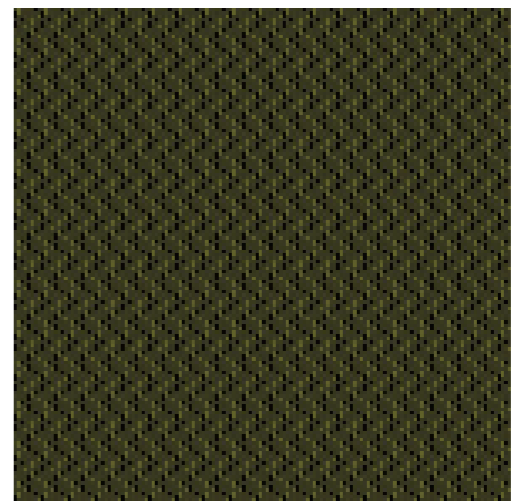
T04.4



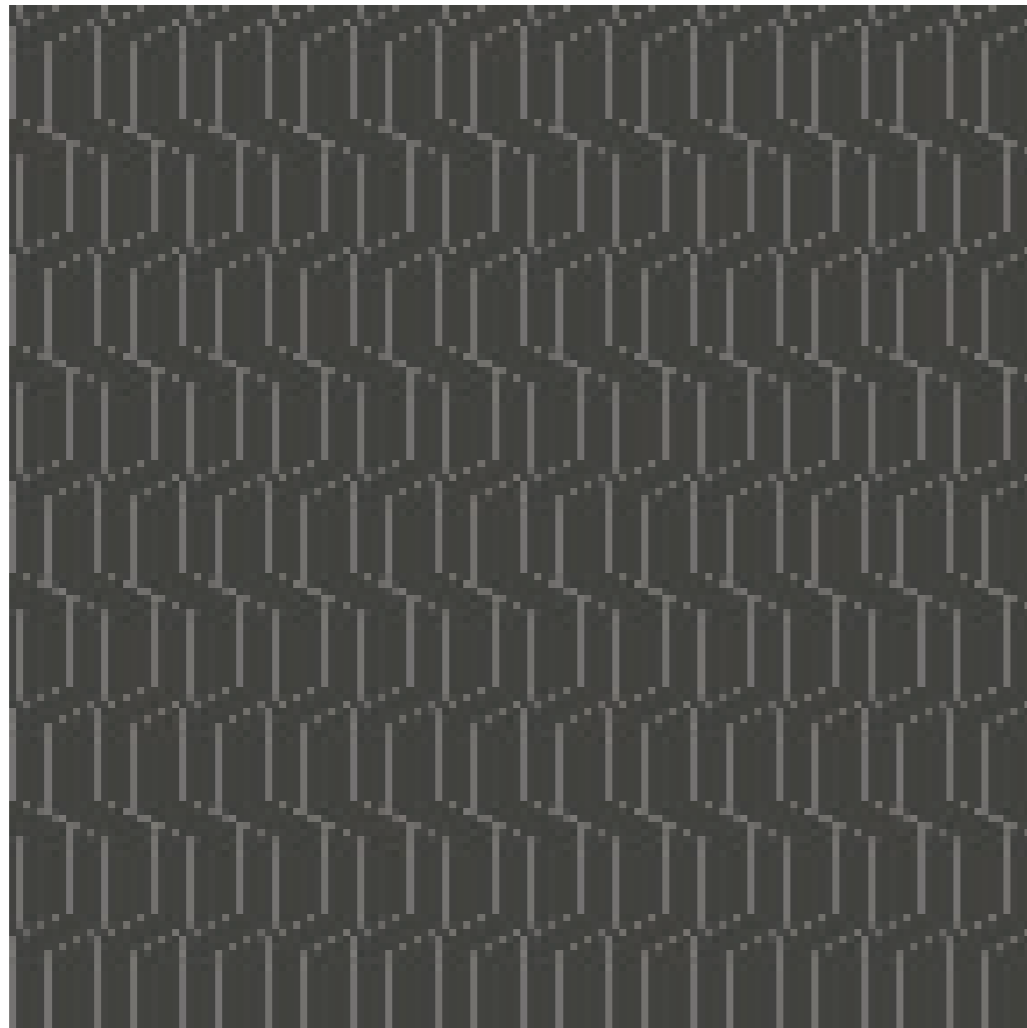
T04.5



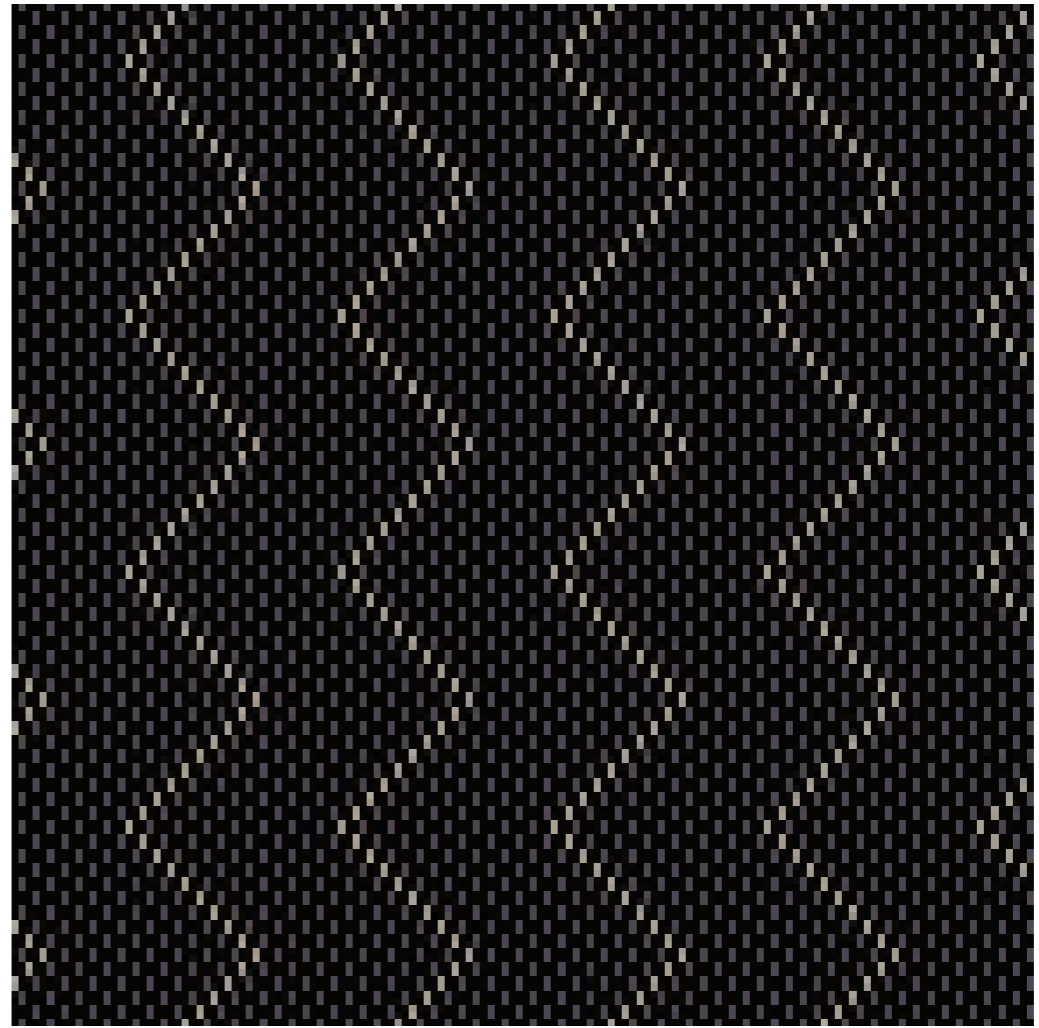
T05.4



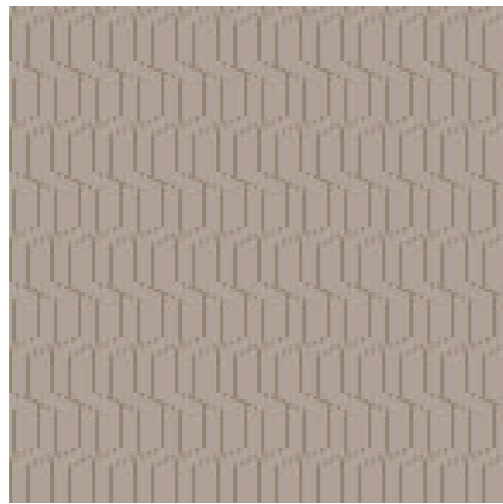
T05.5



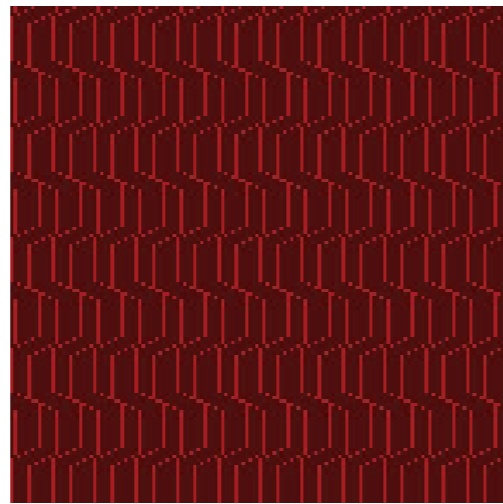
BPS T06.1



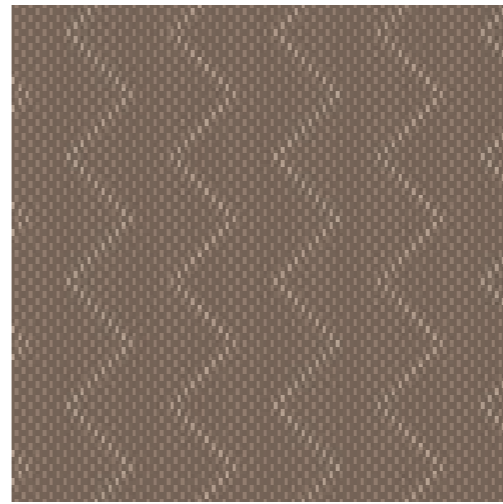
BPS T07.1



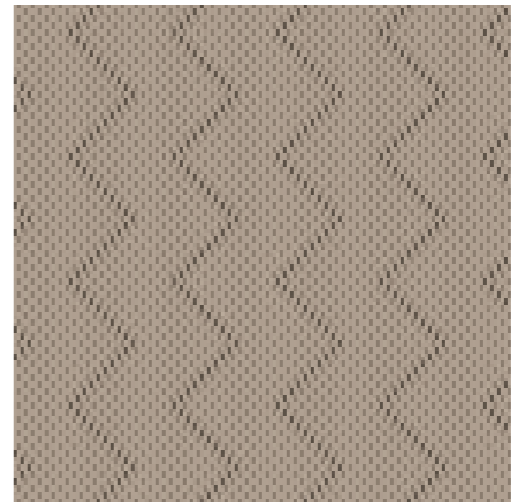
T06.2



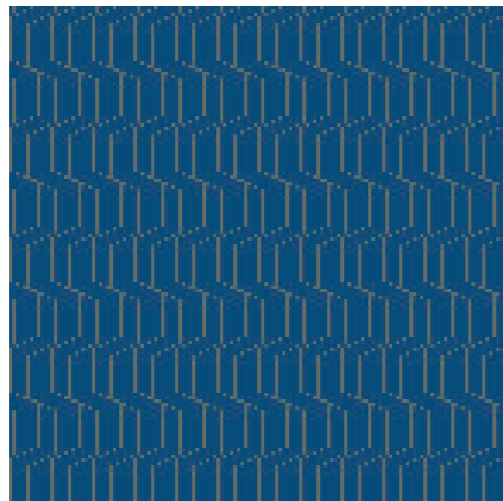
T06.3



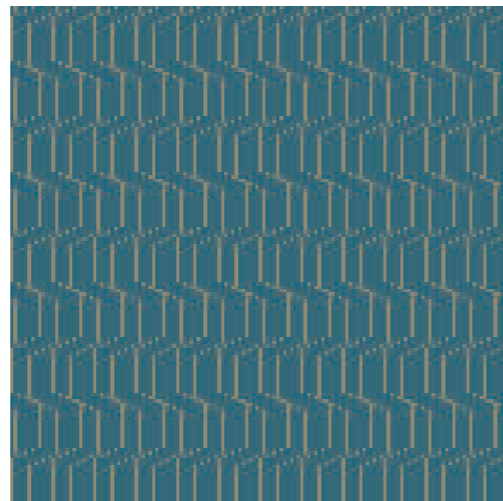
T07.2



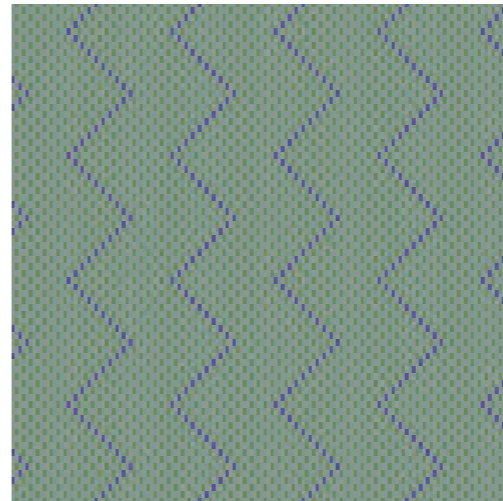
T07.3



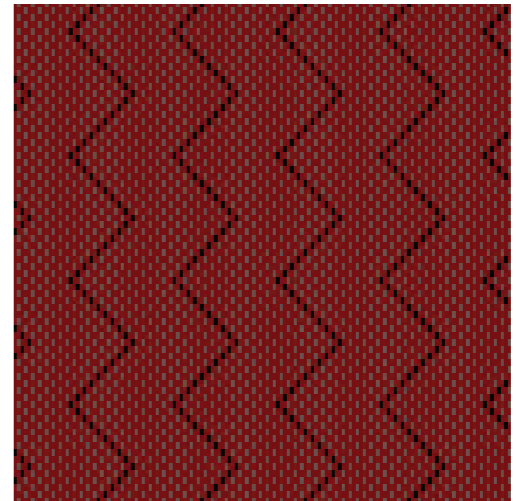
T06.4



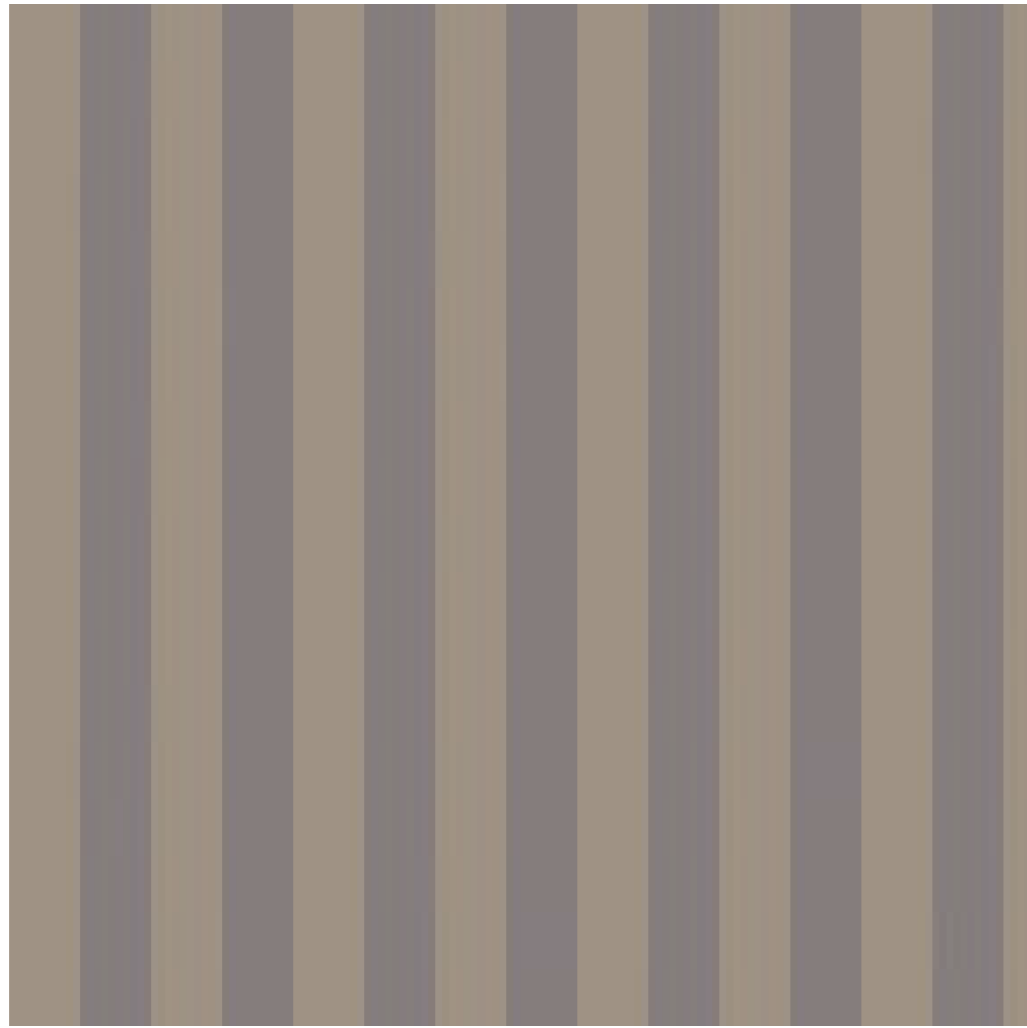
T06.5



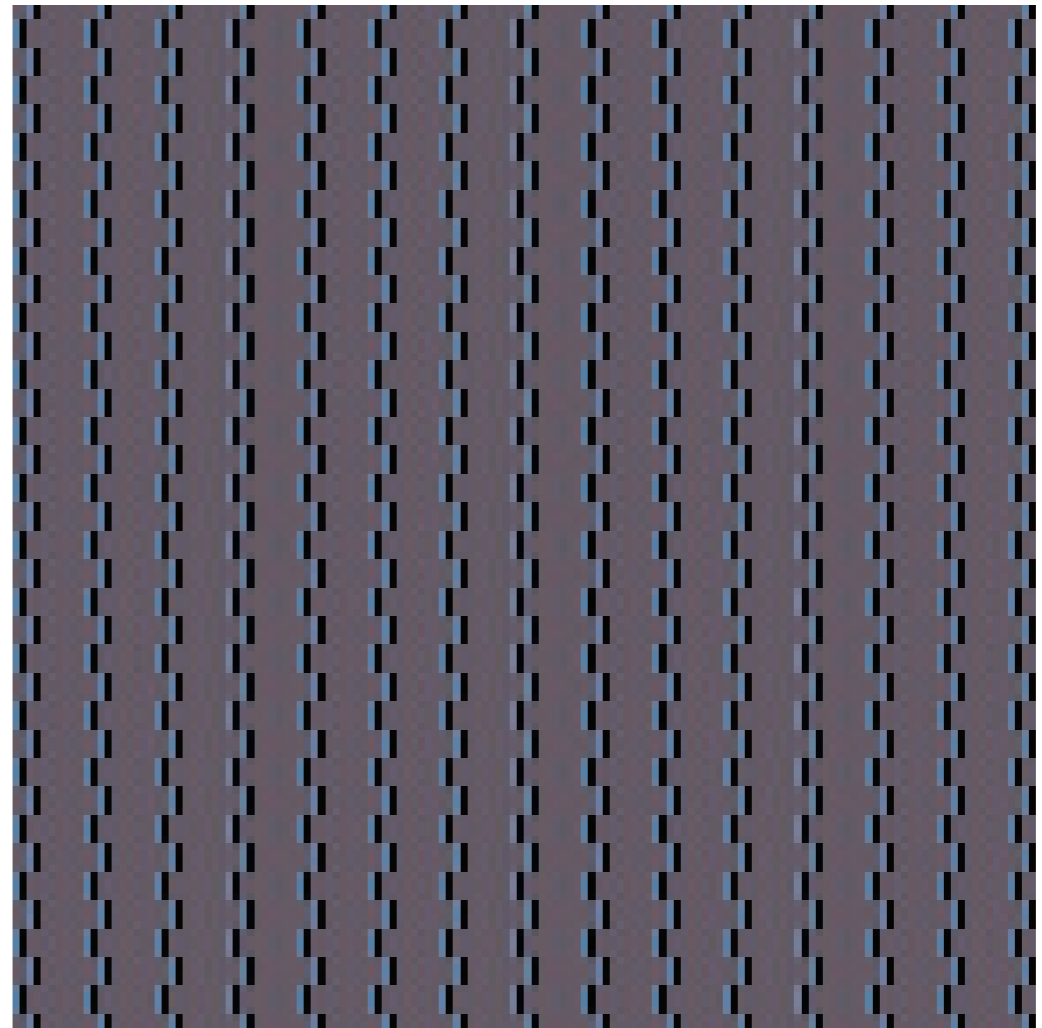
T07.4



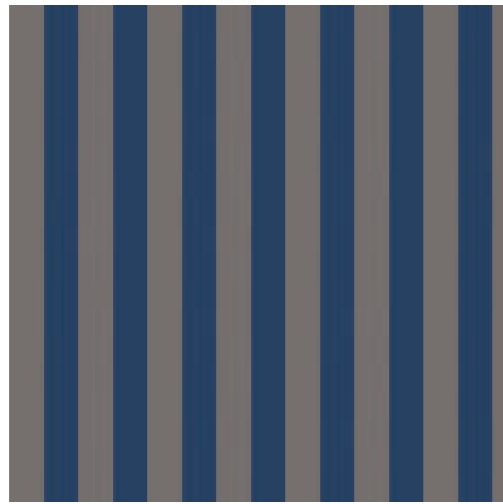
T07.5



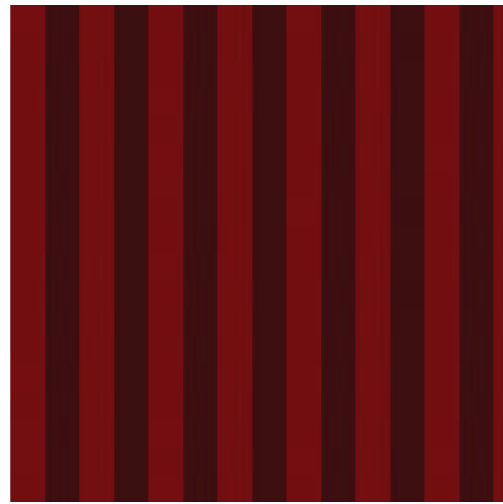
BPS T08.1



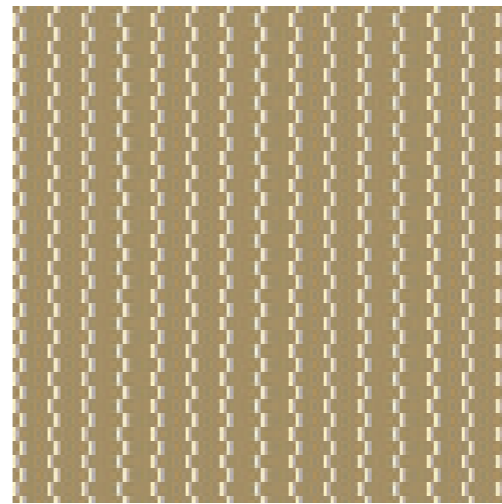
BPS T09.1



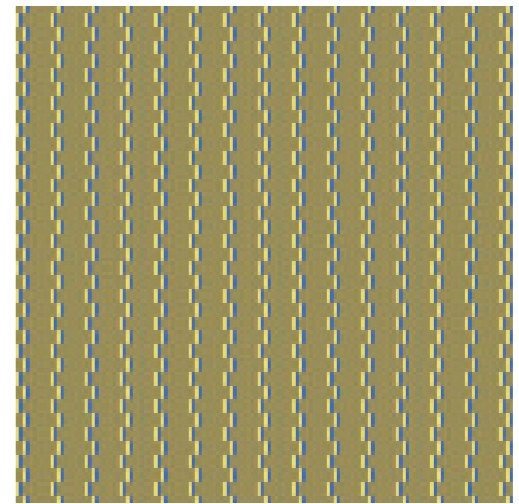
T08.2



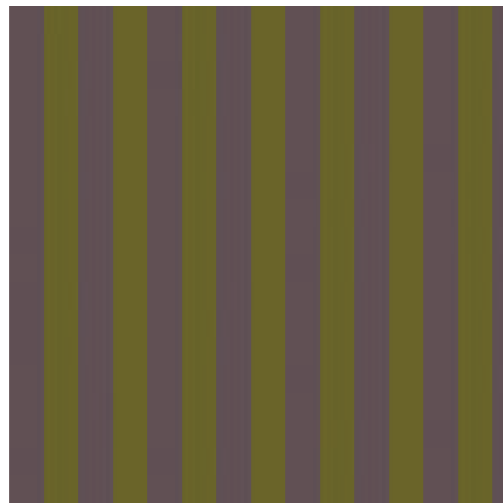
T08.3



T09.2



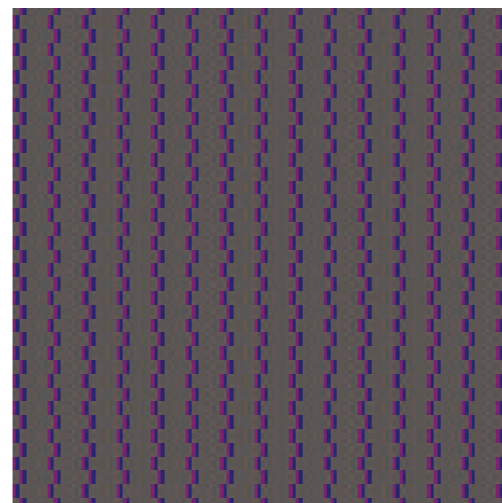
T09.3



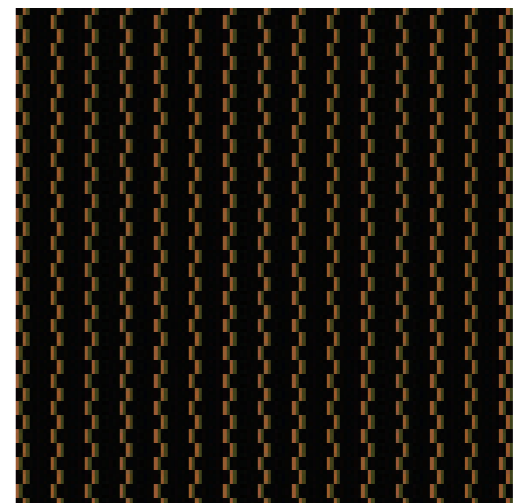
T08.4



T08.5



T09.4



T09.5

Firth Carpets & Floorings Limited

Clifton House, Clifton Mills, Bailiff Bridge, Brighouse, West Yorkshire HD6 4JJ.

T: +44 (0)1484 721529 F: +44 (0)1484 712119 E: sales@firthcarpets.co.uk W: firthcarpets.co.uk