

Axminster Collection

The Firth Axminster Collection is a bespoke and flexible floorcovering system for commercial and leisure installations. The designs in this brochure are intended as a starting point but the creative opportunities are infinite. If you need inspiration we can assist with your initial ideas, adjust one of our own designs from our extensive library or create something refreshingly new to fit your interior scheme. Utilising our 290 colour tuft box makes co-ordinating with other finishes a simple process and the quality most appropriate for your project can be selected from our standard constructions or tailored to individual requirement. Contact our Sales Office for more assistance on 01484 721529.

SPECIFICATION

Construction Cut Pile Axminster
Widths 0.69 m, 0.91 m, 3.66 m, 4.00 m and 4.57 m
Pile yarn 80% British wool (mothproofed) 20% Nylon

	FA 247/7		FA 247/8		FA 247/9		FA 247/10		FA 247/11	
<i>Yarn count</i>	R660/tex/2	2/47's	R660/tex/2	2/47's	R660/tex/2	2/47's	R660/tex/2	2/47's	R660/tex/2	2/47's
<i>Rows (per inch)</i>	7 Row		8 Row		9 Row		10 Row		11 Row	
<i>Pitch (per inch)</i>	7		7		7		7		7	
<i>Pile height above backing</i>	7.2 mm	(+/-0.5 mm)	7.2 mm	(+/-0.5 mm)	7.2 mm	(+/-0.5 mm)	7.2 mm	(+/-0.5 mm)	7.2 mm	(+/-0.5 mm)
<i>Total thickness</i>	9.7 mm	(+/-1 mm)	9.7 mm	(+/-1 mm)	9.7 mm	(+/-1 mm)	9.7 mm	(+/-1 mm)	9.7 mm	(+/-1 mm)
<i>Total pile weight (+/-5%)</i>	994gm/m ² (29.32oz/yd ²)		1136gm/m ² (33.51oz/yd ²)		1278gm/m ² (37.70oz/yd ²)		1420gm/m ² (41.89oz/yd ²)		1562gm/m ² (46.08oz/yd ²)	
<i>Total carpet weight (+/-10%)</i>	1767gm/m ²		1967gm/m ²		2073gm/m ²		2262gm/m ²		2277gm/m ²	
<i>Weft</i>	PP		PP		PP		PP		PP	
<i>Warp</i>	PP/Polyester/Poly cotton		PP/Polyester/Poly cotton		PP/Polyester/Poly cotton		PP/Polyester/Poly cotton		PP/Polyester/Poly cotton	
<i>Backing coating</i>	Non-fray latex		Non-fray latex		Non-fray latex		Non-fray latex		Non-fray latex	

PERFORMANCE

Wear classification General contract Heavy contract Heavy contract Extra heavy contract Extra heavy contract

	FA 342/7		FA 342/8		FA 342/9		FA 342/10		FA 342/11	
<i>Yarn count</i>	R738/tex/3	3/42's	R738/tex/3	3/42's	R738/tex/3	3/42's	R738/tex/3	3/42's	R738/tex/3	3/42's
<i>Rows (per inch)</i>	7 Row		8 Row		9 Row		10 Row		11 Row	
<i>Pitch (per inch)</i>	7		7		7		7		7	
<i>Pile height above backing</i>	7.2 mm	(+/-0.5 mm)	7.2 mm	(+/-0.5 mm)	7.2 mm	(+/-0.5 mm)	7.2 mm	(+/-0.5 mm)	7.2 mm	(+/-0.5 mm)
<i>Total thickness</i>	9.7 mm	(+/-1 mm)	9.7 mm	(+/-1 mm)	9.7 mm	(+/-1 mm)	9.7 mm	(+/-1 mm)	9.7 mm	(+/-1 mm)
<i>Total pile weight (+/-5%)</i>	1112gm/m ² (33.97oz/yd ²)		1271gm/m ² (37.49oz/yd ²)		1430gm/m ² (42.19oz/yd ²)		1589gm/m ² (46.86oz/yd ²)		1743gm/m ² (51.57oz/yd ²)	
<i>Total carpet weight (+/-10%)</i>	1885gm/m ²		2102gm/m ²		2225gm/m ²		2431gm/m ²		2632gm/m ²	
<i>Weft</i>	PP		PP		PP		PP		PP	
<i>Warp</i>	PP/Polyester/Poly cotton		PP/Polyester/Poly cotton		PP/Polyester/Poly cotton		PP/Polyester/Poly cotton		PP/Polyester/Poly cotton	
<i>Backing coating</i>	Non-fray latex		Non-fray latex		Non-fray latex		Non-fray latex		Non-fray latex	

PERFORMANCE

Wear classification Heavy contract Heavy contract Extra heavy contract Extra heavy contract Extra heavy contract

PROPERTIES

<i>Hot metal nut test</i>	BS4790	Pass
<i>Methenamine pill test</i>	ASTM D2859/BS6307	Pass
<i>Radiant panel test</i>	EN13501-1	C _f -s1
<i>Static electricity</i>		Will not normally cause discomfort above 25% RH
<i>Colour fastness</i>	EN1307	4/5
<i>Light</i>	EN1307	Min 4
<i>Shampoo</i>	EN1307	Min 4
<i>Dry rubbing</i>	EN1307	Min 4
<i>Wet rubbing</i>	EN1307	Min 4

GENERAL INFORMATION

All technical specifications are subject to normal manufacturing tolerances found in BS EN1307:2008 and we reserve the right to change these without prior notice. Full specification available on request.

Colour

Due to limitations in the manufacturing process, colour may vary from batch to batch. Cut pile carpets, particularly plain colours, may show shading/pile reversal. This tendency is inherent in all cut pile fabrics and is not detrimental to the wear of the carpet. It cannot be considered a manufacturing defect.

Installation

The method of installation should conform to BS 5325. The subfloor should be dry, smooth, clean and level and any defects should be made good before laying.

Maintenance

Vacuum for normal day to day cleaning. Spills and stains must be removed as part of a comprehensive maintenance plan including the use of dry or hot water extraction methods when required, depending upon local conditions. Firth Carpets and Floorings products will provide maximum performance if installed and maintained with the recommendations set out in our installation and maintenance schedules, available on request.

Firth Carpets & Floorings Limited

Clifton House, Clifton Mills, Bailiff Bridge, Brighouse, West Yorkshire HD6 4JJ.
T: +44 (0)1484 721529 F: +44 (0)1484 712119 E: sales@firthcarpets.co.uk W: firthcarpets.co.uk



BPS A01.1



A01.2



A01.3



A01.4



A01.5



BPS A02.1



BPS A03.1



A02.2



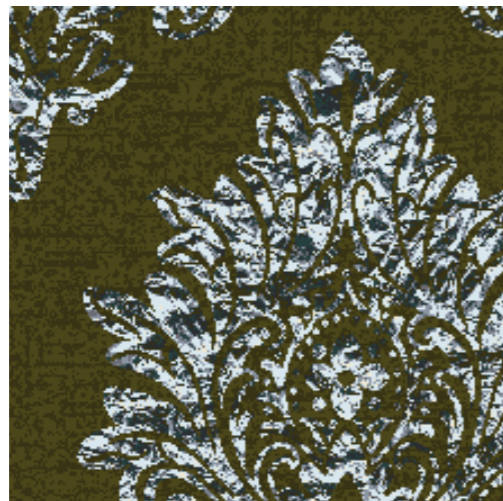
A02.3



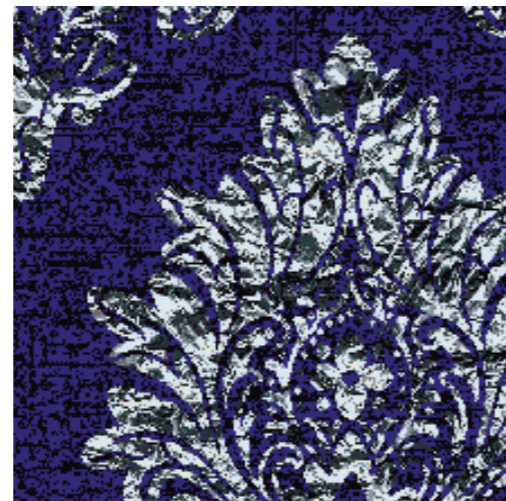
A03.2



A03.3



A02.4



A02.5



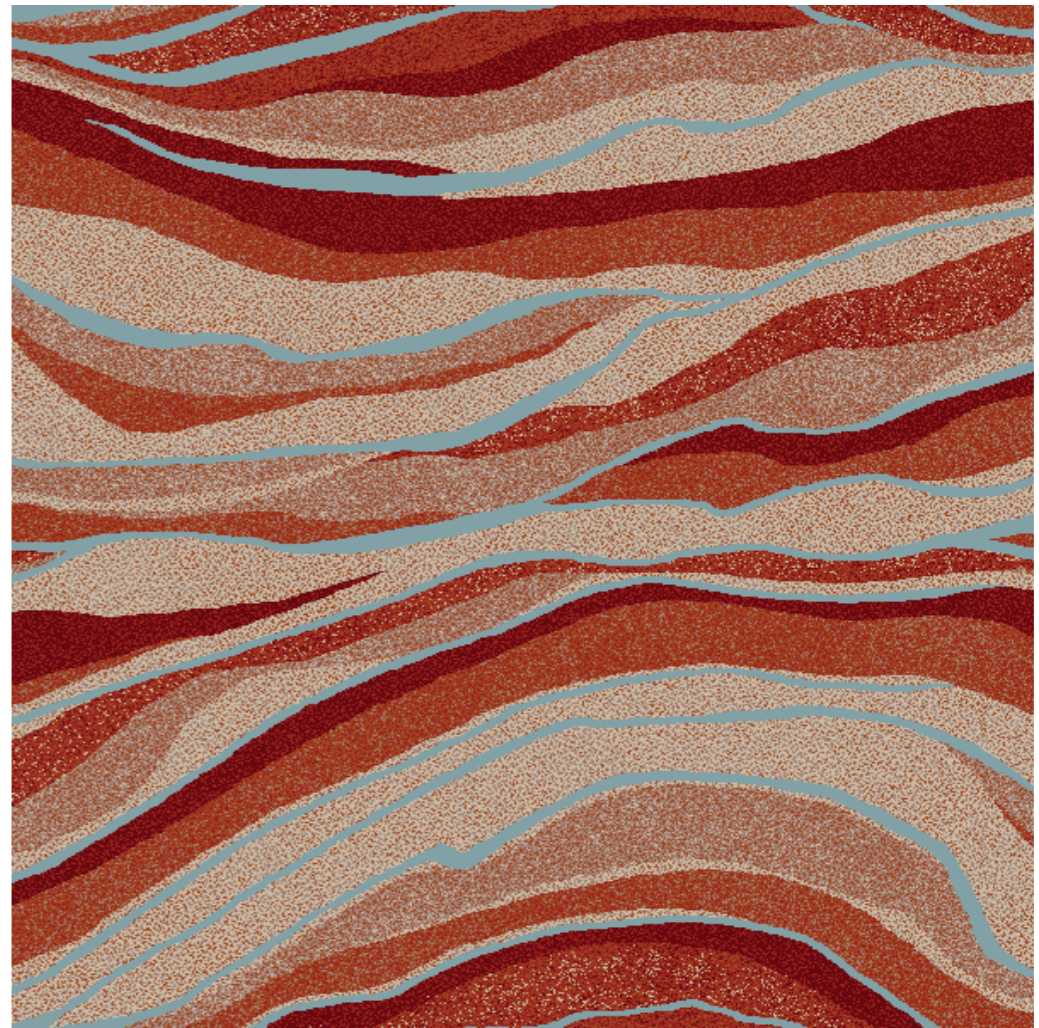
A03.4



A03.5



BPS A04.1



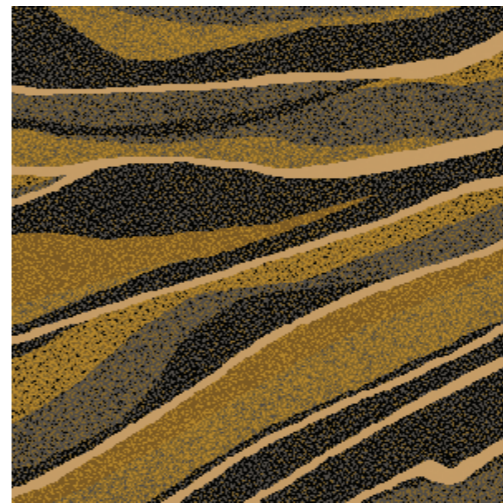
BPS A05.1



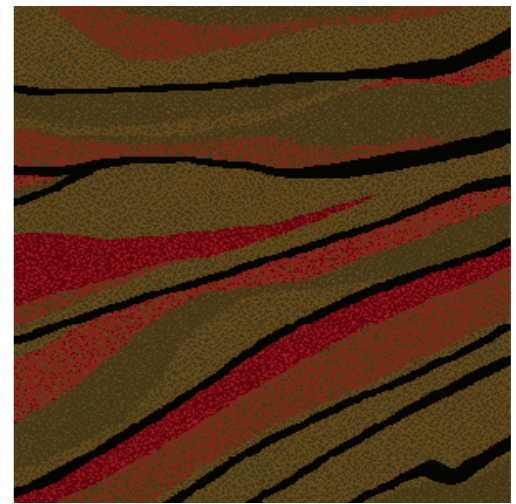
A04.2



A04.3



A05.2



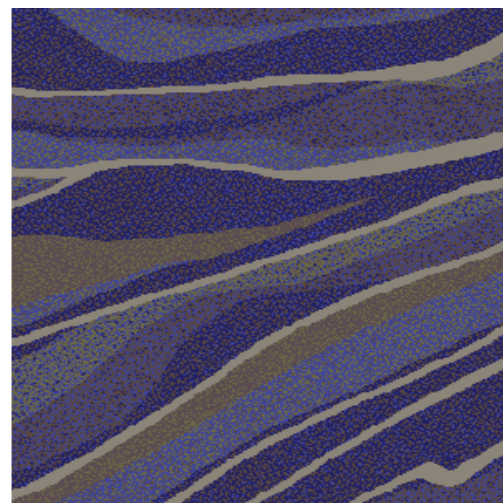
A05.3



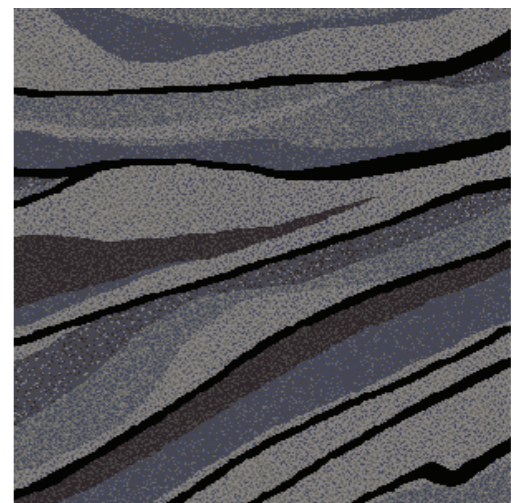
A04.4



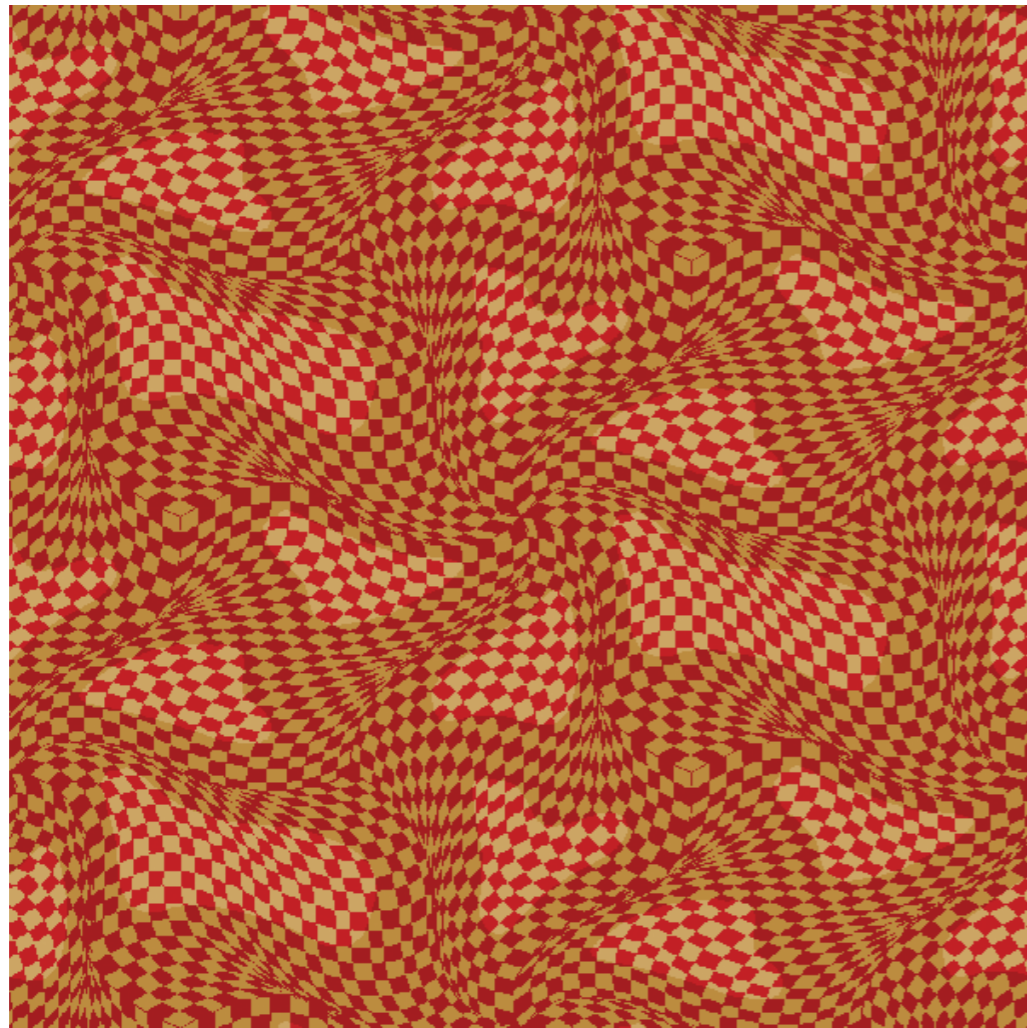
A04.5



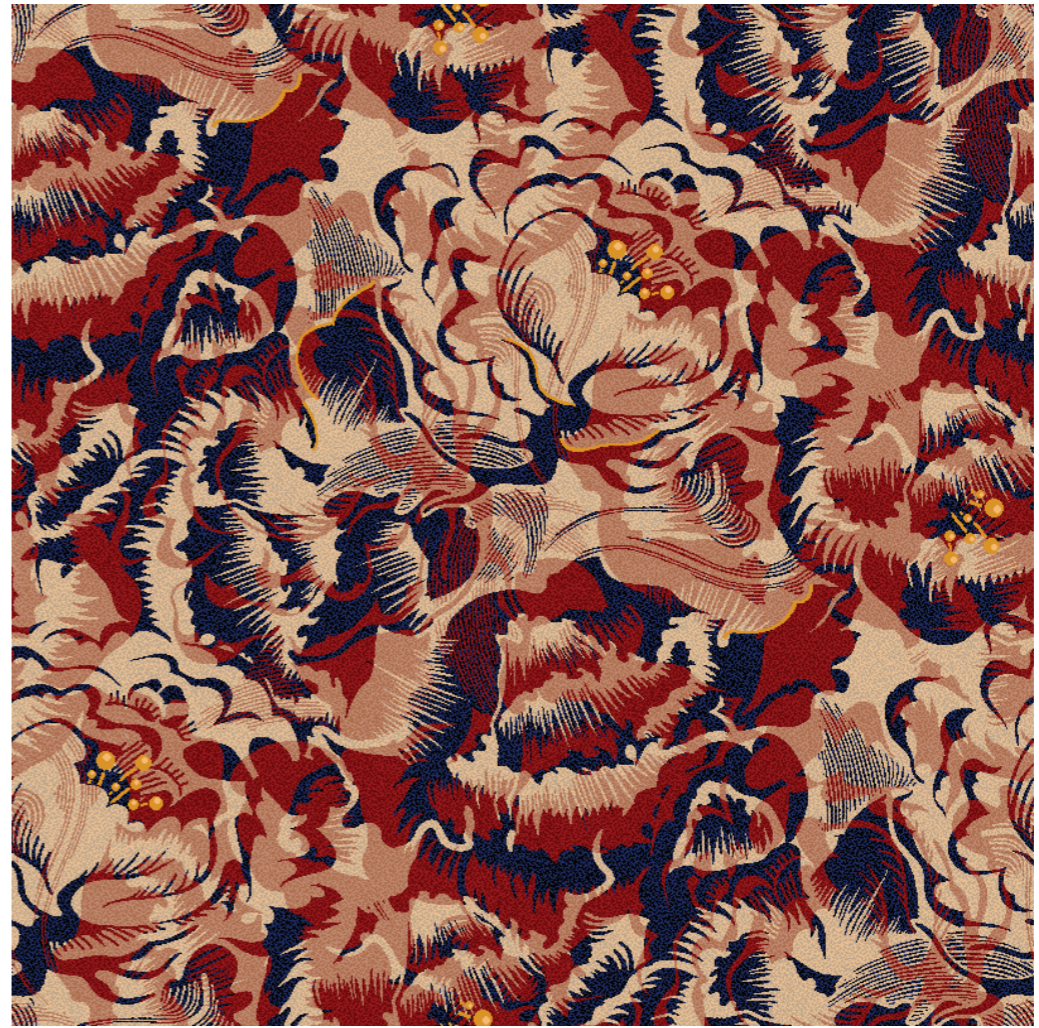
A05.4



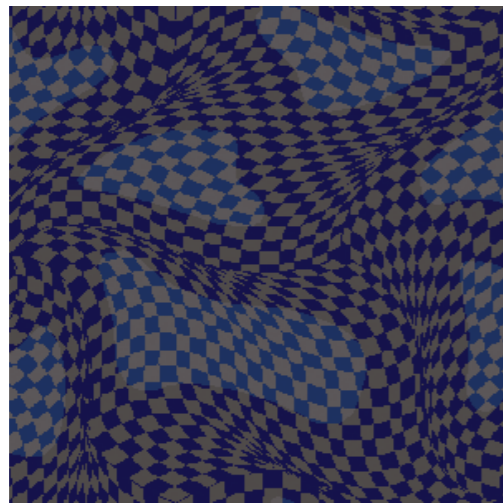
A05.5



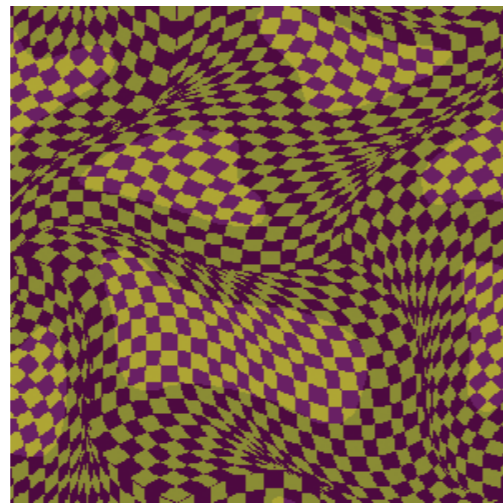
BPS A06.1



BPS A07.1



A06.2



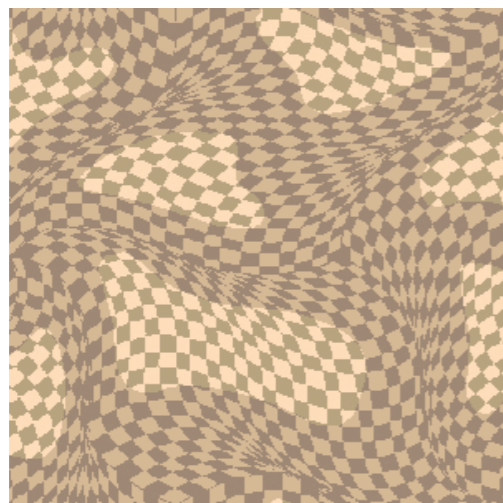
A06.3



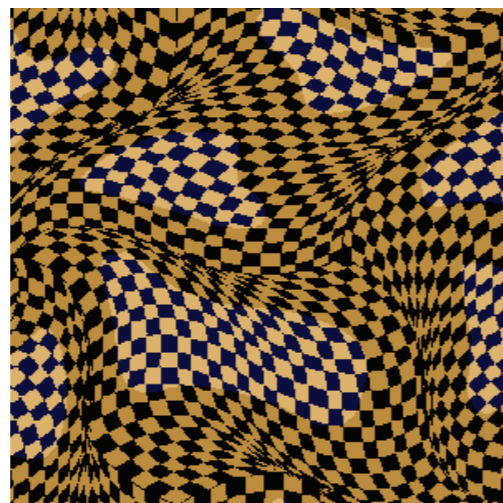
A07.2



A07.3



A06.4



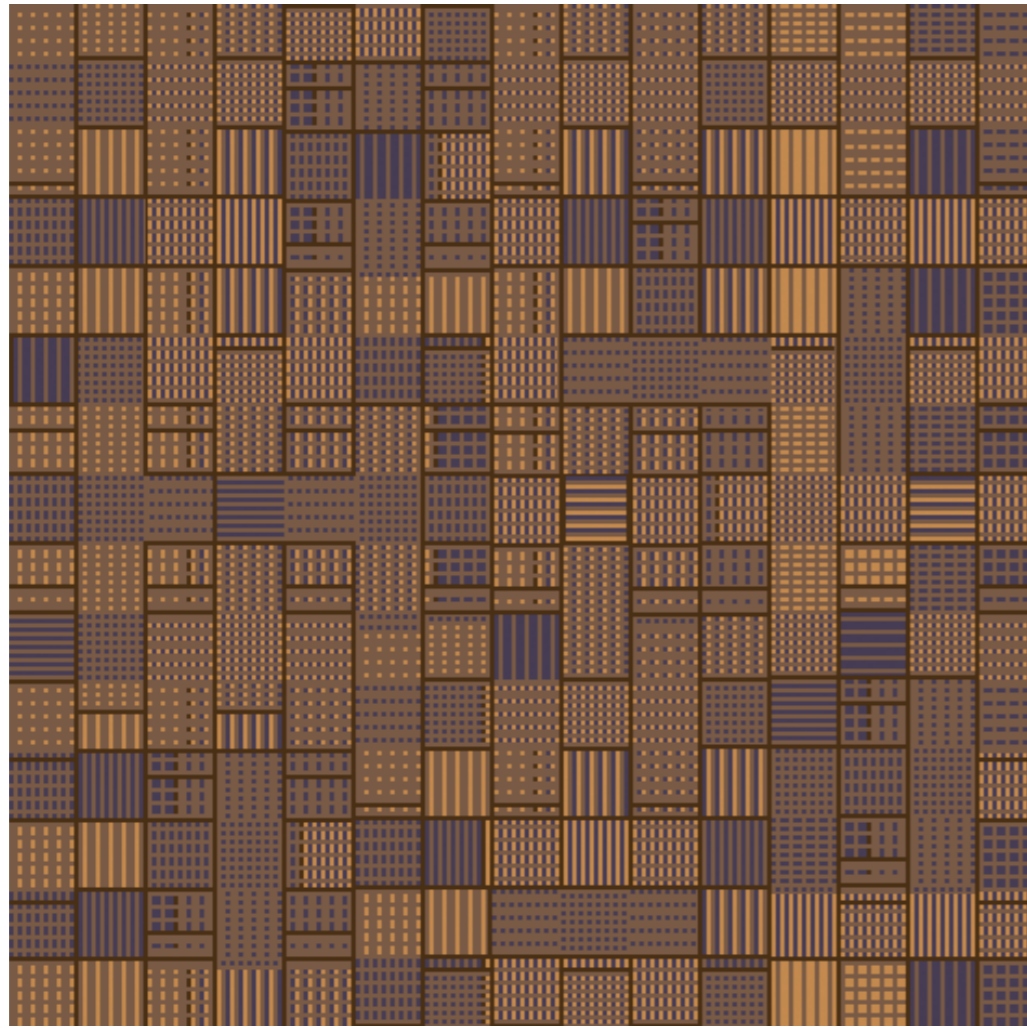
A06.5



A07.4



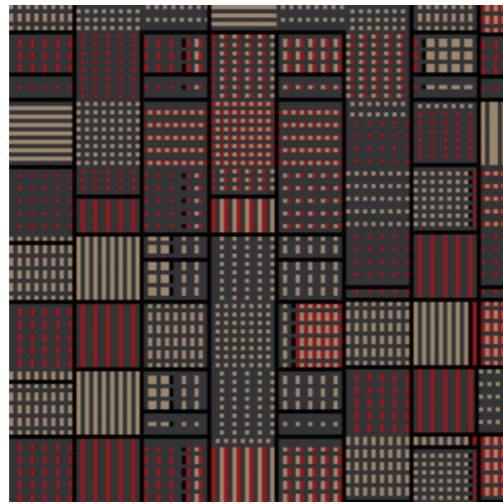
A07.5



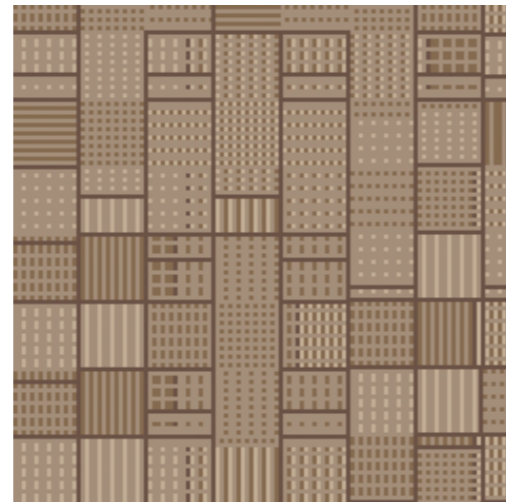
BPS A08.1



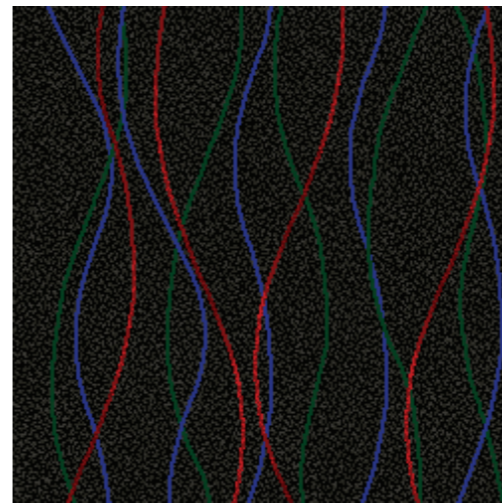
BPS A09.1



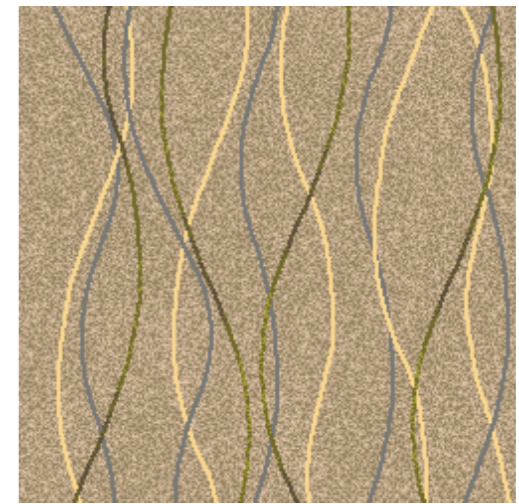
A08.2



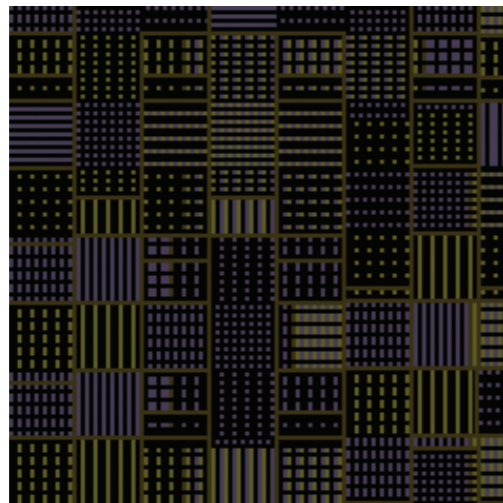
A08.3



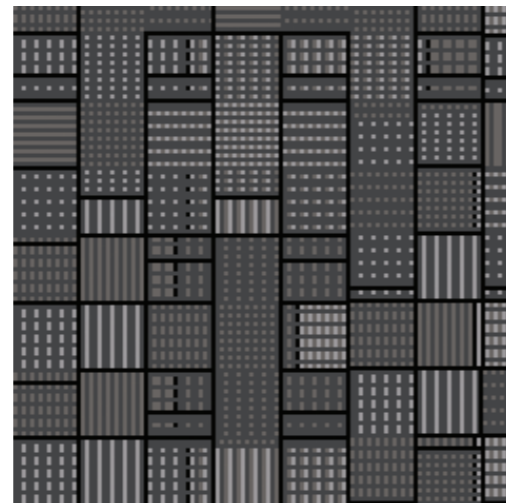
A09.2



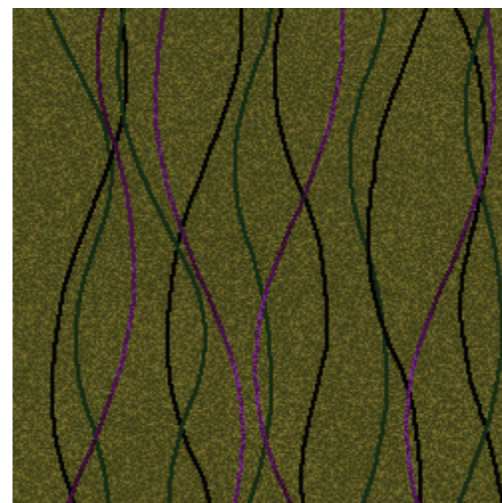
A09.3



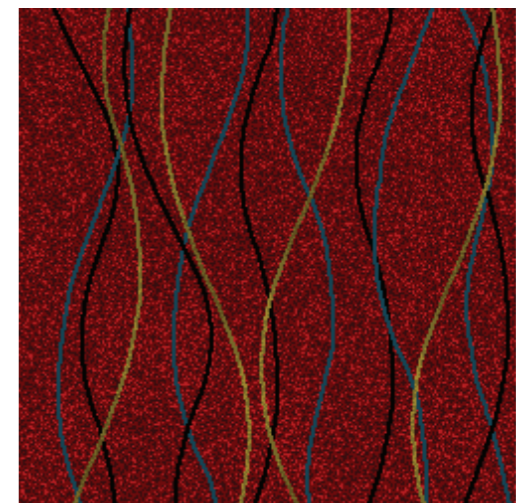
A08.4



A08.5



A09.4



A09.5

Firth Carpets & Floorings Limited

Clifton House, Clifton Mills, Bailiff Bridge, Brighouse, West Yorkshire HD6 4JJ.

T: +44 (0)1484 721529 F: +44 (0)1484 712119 E: sales@firthcarpets.co.uk W: firthcarpets.co.uk